



Approximate Scale in Miles
 0 0.5 1

LEGEND

- Fill
- Rock Outcrop
- Undifferentiated Sediments
- 1848 Shoreline
- Alignment
- Hazardous Materials Site

HAZARDOUS MATERIAL SITE LOCATIONS

September 2001
 43-F0066867.00

San Francisco
 Downtown Extension Project
 San Francisco, California



FIGURE 4.17-1



Fig 2A Folsom Street, Near First Street, Looking North to Downtown



Fig 2B Harrison Street at Beale Street, Looking East to Bay Bridge

SOURCE: Environmental Science Associates
Parsons Transportation Group

Transbay Terminal/Caltrain Downtown Extension / Redevelopment Project EIS/EIR ■

Figure 4.18-2
Existing Views



Fig 3A First Street, Near Harrison Street, Looking South to Elevated Bay Bridge Approach



Fig 3B Beale Street, Looking South to Bay Bridge Steel Work

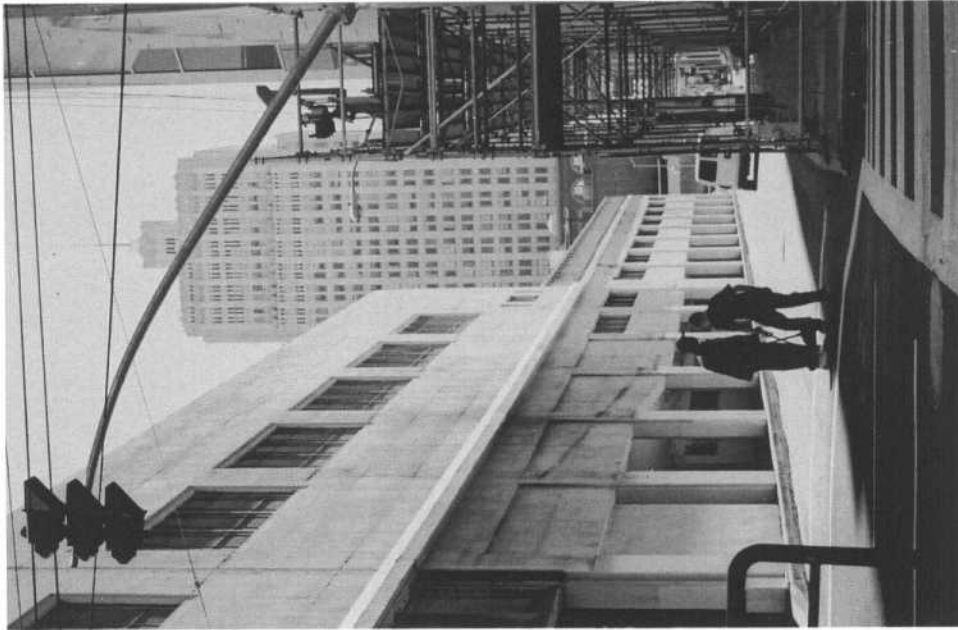


Fig 4A Pacific Telephone Building (New Montgomery Street)
from Minna Street

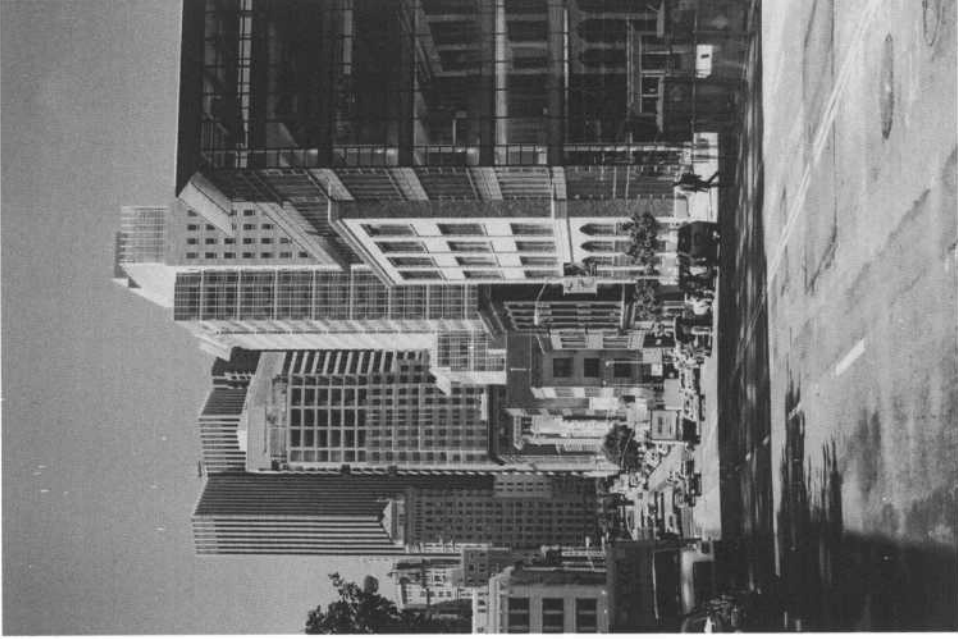


Fig 4B Second Street Corridor, Looking North



Fig 5A First Street, Near Howard Street, Looking South to Bank of America Clock Tower

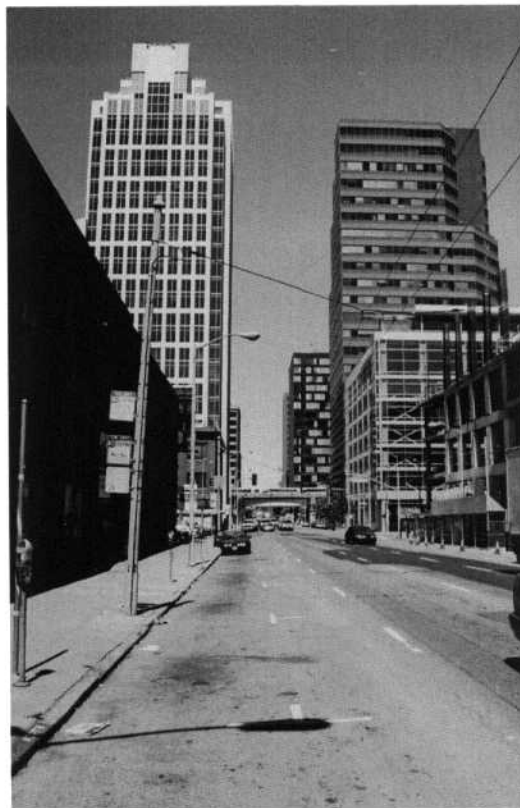


Fig 5B Howard Street, Near First Street, Looking East to New Office Tower (199 Fremont Street)

SOURCE: Environmental Science Associates
Parsons Transportation Group

Transbay Terminal/Caltrain Downtown Extension /Redevelopment Project EIS/EIR ■

Figure 4.18-5
Existing Views



Fig 6A Folsom Street at First Street, Looking East



Fig 6B Main Street at Howard Street, Looking North

SOURCE: Environmental Science Associates
Parsons Transportation Group

Transbay Terminal/Caltrain Downtown Extension /Redevelopment Project EIS/EIR ■

Figure 4.18-6
Existing Views



View of Caltrain Storage Yard and Downtown San Francisco Looking Northeast



Fig 8A Transbay Terminal Building



Fig 8B Folsom Street, Near Fremont Street, Looking East to the Bay

SOURCE: Environmental Science Associates
Parsons Transportation Group

Transbay Terminal/Caltrain Downtown Extension / Redevelopment Project EIS/EIR ■

Figure 4.18-8
Existing Views



Fig 9A Fremont Street at Harrison Street, Looking North to Downtown



Fig 9B Folsom Street at Second Street, Looking East